

WAKELY ASSOCIATES, INC.  
ARCHITECTS  
30500 Van Dyke Avenue Suite 209  
Warren, Michigan 48093

ADDENDUM NO. THREE  
WARREN WOODS PUBLIC SCHOOLS  
Middle School Serving Line Renovation  
Page 1 of 1 (write up only)

January 12, 2022

ADDENDUM NO. THREE to the plans and specifications for the WARREN WOODS PUBLIC SCHOOLS, MIDDLE SCHOOL SERVING LINE RENOVATIONS, Warren, MI, Architect's Project No. 211918, dated December 20, 2021.

The above plans and specifications are modified, supplemented or augmented as follows, and this ADDENDUM NO. THREE, is hereby made a part of the contract documents.

**Drawings A2.0, ED1.00 and E3.01 are included in this Addendum.**

**ARCHITECTURAL DRAWINGS**

**ITEM NO. A1: Refer to Drawing A2.0 (re-issued)**

1. Added light fixtures in the reflected ceiling plan.

**ITEM NO. A2: Refer to Drawing A3.0 (not re-issued)**

1. Refer to Interior Elevation 6, Graphic (school logo and "Wolverine Café") can be done in vinyl or painted. It will be the contractor's choice.

**ELECTRICAL DRAWINGS**

**ITEM NO. E1: Refer to Drawing ED1.00 (re-issued)**

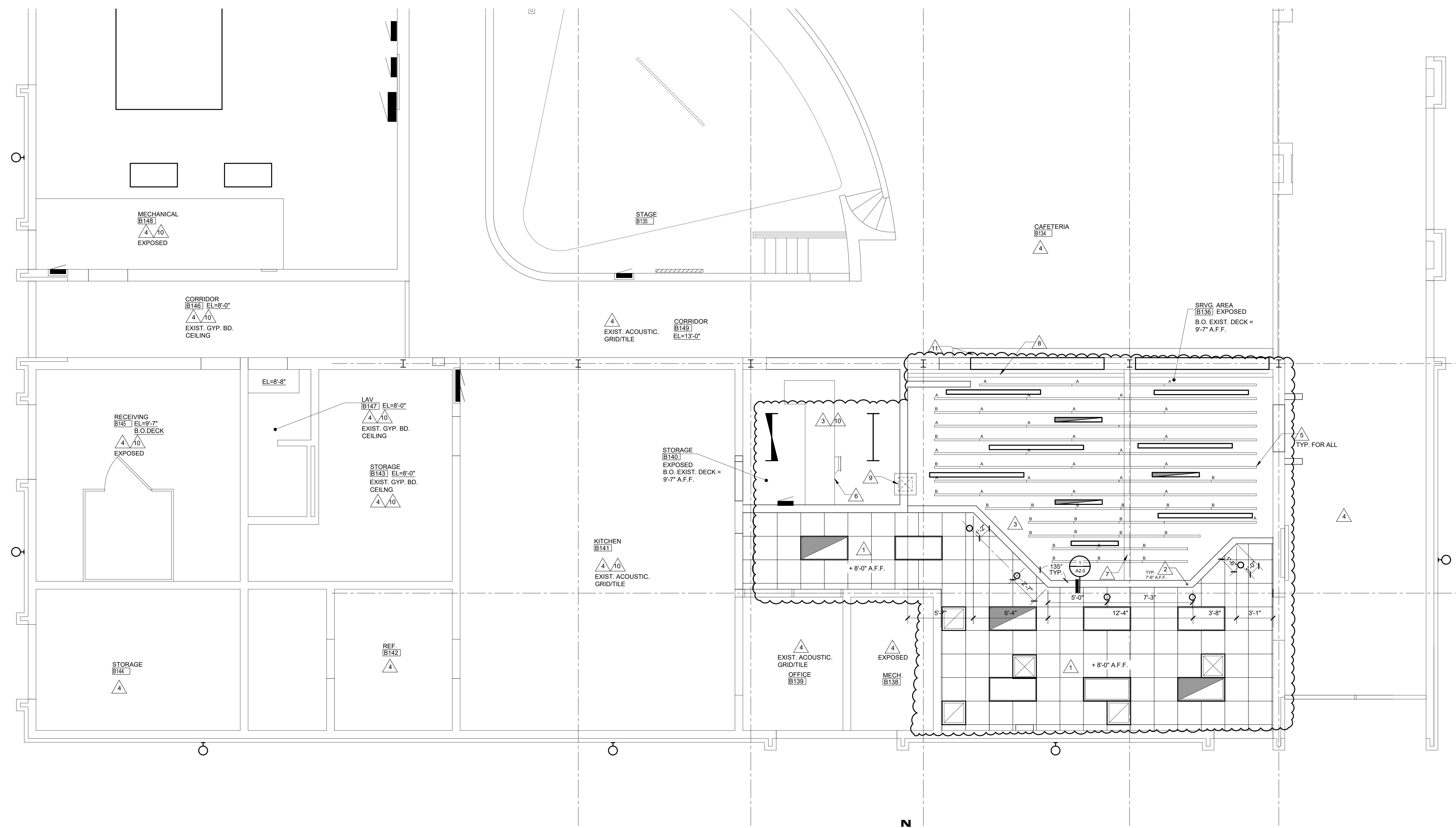
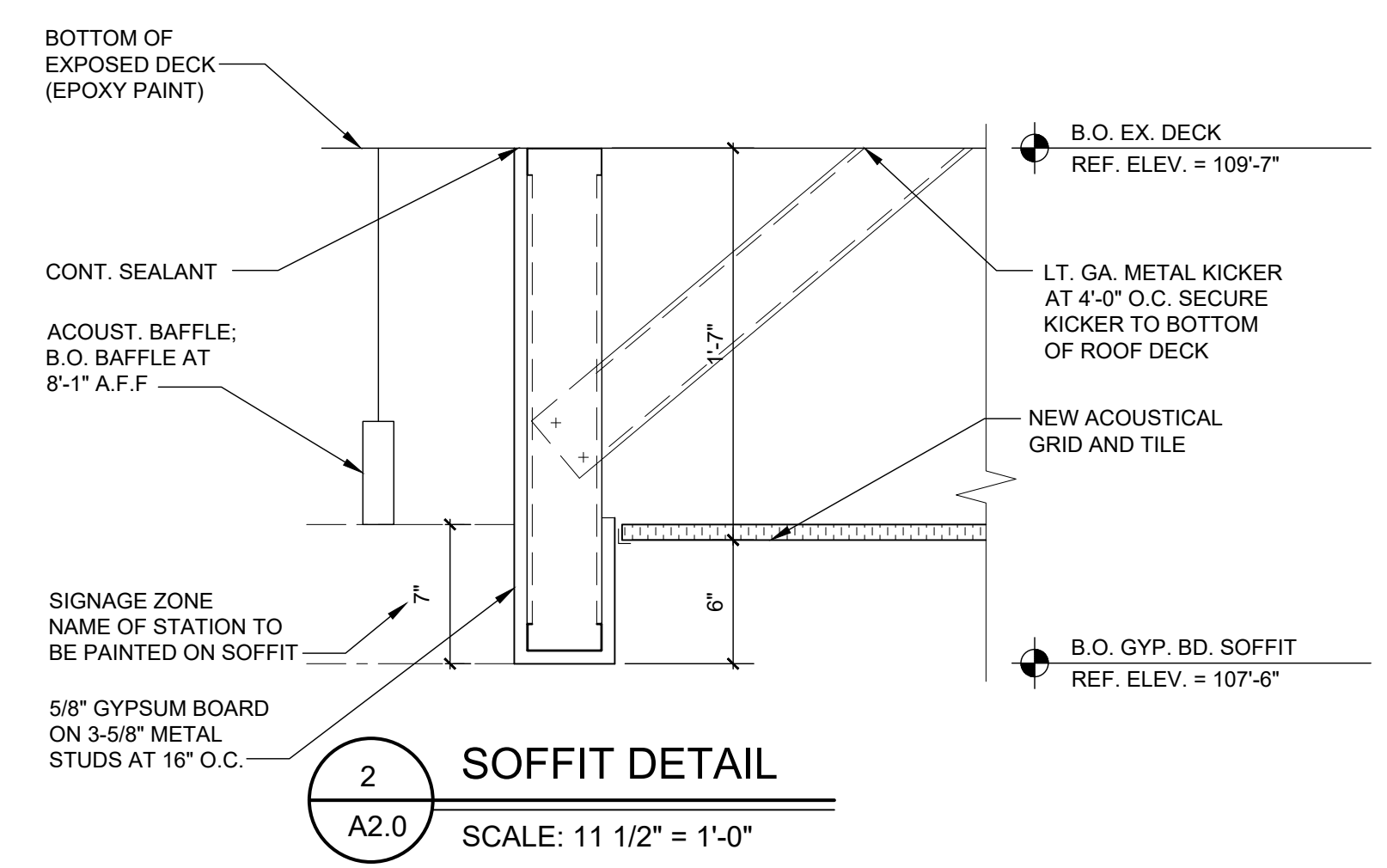
1. Added receptacle to be demolished as indicated.

**ITEM NO. E2: Refer to Drawing E3.01 (re-issued)**

1. For clarification only, added existing Main distribution panel, transformer and branch panels, as indicated.
2. Relocated telecommunication outlets as indicated.
3. Removed Construction Keynote 2 for receptacle that was demolished.
4. Added circuit for FSE item 24B, as indicated.

**END OF ADDENDUM NO. 3**

Cc: Matt Dishman, Warren Woods Public Schools  
Neil Cassabon, Warren Woods Public Schools  
Stacey Denewith-Fici, Warren Woods Public Schools  
James McKinnon, Peter Basso Associates  
Brett Galbraith, Peter Basso Associates



**REFLECTED CEILING PLAN GENERAL NOTES:**

- REFER TO ELECTRICAL DRAWINGS FOR LIGHT FIXTURE TYPE, LAYOUT, AND QUANTITY.
- REFER TO MECHANICAL DRAWINGS FOR DIFFUSER AND GRILLE LOCATIONS AND SIZES.
- CENTER ALL CEILING TILES AND GRID EQUALLY WITHIN EACH INDIVIDUAL ROOM.
- TYPICAL EXHAUST FAN NOTE: REMOVE EXISTING ACOUSTICAL CEILING TILE AS REQUIRED TO INSTALL NEW EXHAUST FAN. CUT TILE AS REQUIRED AND ADD NEW METAL TEE GRID AT NEW DIFFUSER EDGES. REINSTALL TILE. NOTE: ADJUST LOCATION OF NEW DIFFUSER TO AVOID INTERFERENCE WITH EXISTING SPRINKLER HEADS, LIGHT FIXTURES, ETC.

**CEILING LEGEND**

	NEW SURFACE MOUNTED 2'x4' LAY-IN LED LIGHT FIXTURE IN ACOUSTICAL CEILING SYSTEM (REFER TO ELEC DWGS)
	1' x 4' SUSPENDED LED FIXTURE (REFER TO ELEC DWGS)
	LINEAR, SUSPENDED LED LIGHT FIXTURES LENGTH VARY - 4'-0", 8'-0". SEE PLAN. (REFER TO DWGS)
	LOW PROFILE, RECESSED LED LIGHT FIXTURE (REFER TO ELEC. DWGS.)
	2x2 LAY-IN ACOUSTICAL CEILING IN EXP. METAL TEE GRID
	DIFFUSER (REFER TO MECH. DWGS)
	RETURN AIR REGISTER (REFER TO MECH. DWGS)
	EXISTING ONE HOUR FIRE-RATED WALL

**TYPICAL CEILING PLAN NOTES**

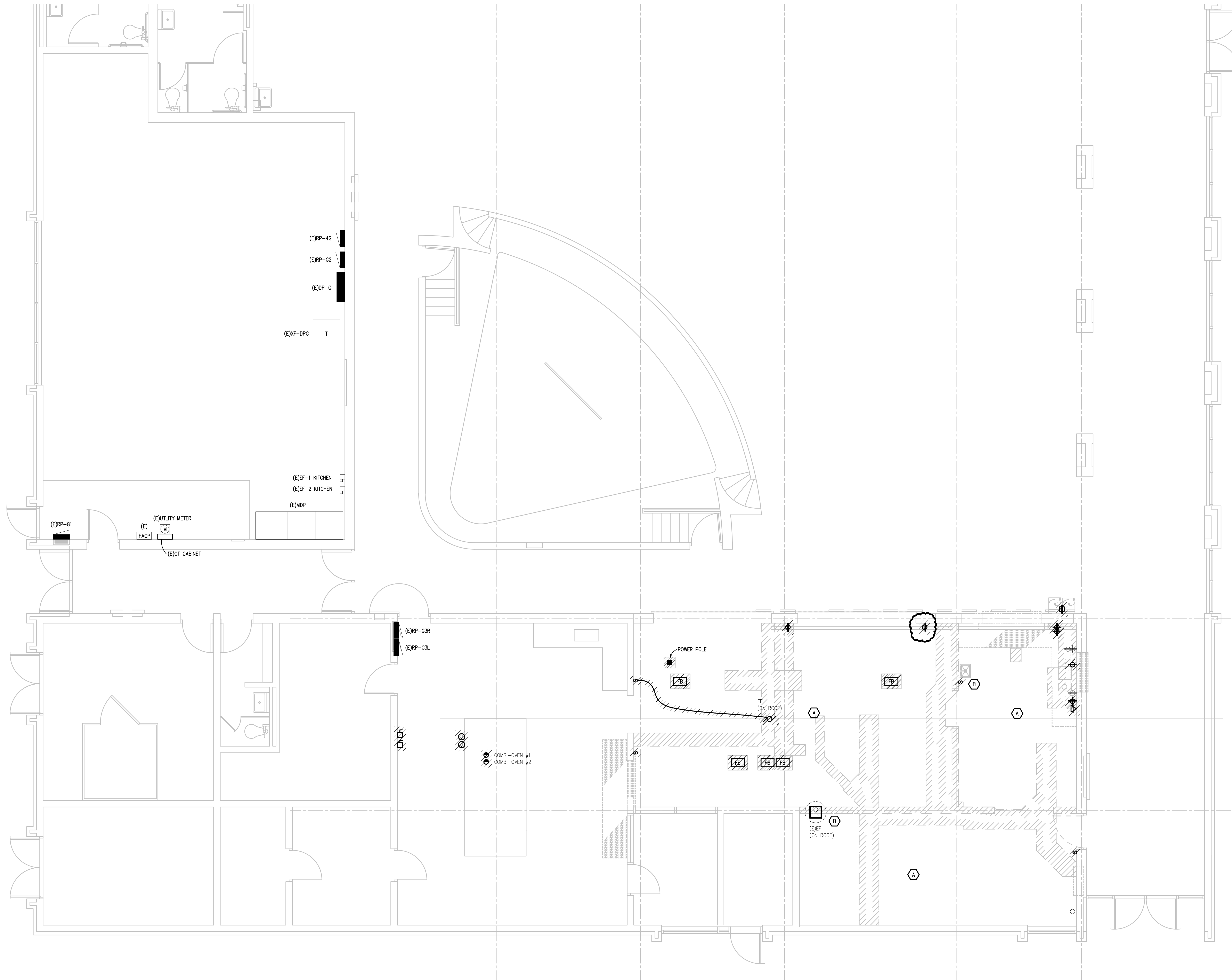
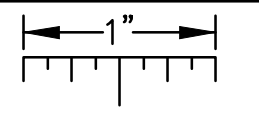
- COORDINATE ALL CEILING WORK WITH MECHANICAL & ELECTRICAL PLANS.
- CENTER ALL CEILING TILES AND GRID EQUALLY WITHIN EACH INDIVIDUAL ROOM.

**REFLECTED CEILING KEYNOTES:**

- NEW CEILING TILE, GRID AND LED LIGHTING. REFER TO ELEC. DWGS.
- NEW GYPSUM BOARD SOFFIT. REFER TO ELEC. DWGS.
- PAINT ALL ROOF DECK, DUCTWORK, CONDUIT, ETC. COLOR TO BE DETERMINED.
- EXISTING CEILING AND LIGHTING TO REMAIN.
- NEW 5" T FIBERGLASS SUSPENDED ACOUSTICAL BAFFLES. BOTTOM OF BAFFLE AT 8'-1". TWO LENGTHS TO BE USED AS LABELED ON THE PLAN: A = 7'-10" LENGTH, B = 3'-10"; REFER TO SPECS.
- EXPOSED DUCTWORK (EPOXY PAINT). REFER TO MECH. DWGS.
- EXPOSED STEEL BEAM (EPOXY PAINT). REFER TO STRUCT. DWGS.
- NEW STEEL BEAM AND TRACK FOR FOLDING SECURITY GRILLE (EPOXY PAINT). REFER TO DETAIL 4/A1.1.
- PROVIDE NEW ROOF DECK OR METAL CLOSURE PLATE WHERE EXIST. EXHAUST FAN, GRILLE, ETC. WAS DEMOLISHED. VERIFY LOCATION IN THE FIELD. REFER TO ROOF CURB CAP DETAIL ON SHEET M6.1. PAINT (EPOXY) BOTTOM OF NEW METAL DECK OR CLOSURE PLATE. CLOSE OFF OPEN FLUTES OF DECK.
- NEW ELECTRICAL CONDUIT TO BE SURFACE MOUNTED TO BOTTOM OF EXPOSED DECK AND/OR GYPSUM BOARD CEILING. CONDUIT TO BE ABOVE CEILING IN SPACES WITH ACOUSTICAL CEILING GRID. REMOVE/REPLACE ALL CEILING GRID AS REQUIRED FOR NEW WORK. PAINT ALL EXPOSED CONDUIT WHITE TO MATCH THE EXISTING CEILING. PROVIDE FIREPROOFING FOR CONDUIT PENETRATING FIRE RATED WALLS.
- NEW GYP. BD./FRAMING ABOVE OPENINGS (EPOXY PAINT). REMOVE AND REPLACE EXIST. CAFETERIA CEILING AT THE NEW GYP. BD. WALL AS REQUIRED FOR NEW CONSTRUCTION.

**1 ENLARGED REFLECTED CEILING PLAN**  
SCALE: 1/4" = 1'-0"

THE FOLLOWING DIMENSION EQUALS ONE INCH WHEN PRINTED TO SCALE.



**ELECTRICAL DEMOLITION GENERAL NOTES:**

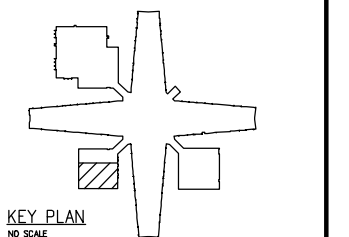
1. VISIT THE SITE PRIOR TO SUBMISSION OF BID TO EXAMINE THE EXISTING CONDITIONS AND THE EXTENT OF DEMOLITION WORK.
2. EXAMINE THE DRAWINGS OF OTHER TRADES AND BE FAMILIAR WITH THE DEMOLITION REQUIRED BY OTHER TRADES. PERFORM ALL INCIDENTAL ELECTRICAL DEMOLITION AND/OR RELOCATION REQUIRED TO FACILITATE THE DEMOLITION WORK OF OTHER TRADES, WHETHER OR NOT SPECIFICALLY INDICATED.
3. REMOVE EQUIPMENT OR MATERIALS AS INDICATED ON PLAN WITH CROSS HATCHING. DEMOLITION SHALL INCLUDE, BUT NOT BE LIMITED TO, THOSE COMPONENTS SHOWN.
4. COORDINATE WITH NEW WORK PLANS, ONE LINE DIAGRAMS AND RISER DIAGRAMS FOR EXTENT OF DEMOLITION WORK.
5. PROVIDE PROPER SUPPORT FOR EXISTING TO REMAIN CONDUITS AND BOXES WHERE EXISTING SUPPORT IS TO BE REMOVED. RE-ROUTE BRANCH CIRCUIT CONDUITS AND RELOCATE JUNCTION BOXES AS REQUIRED TO FACILITATE INSTALLATION OF NEW EQUIPMENT AND SYSTEMS IN CEILING SPACES.
6. REMOVE ALL CONDUIT AND WIRE BACK TO THE SOURCE OR NEAREST UPSTREAM DEVICE REMAINING IN SERVICE.
7. MAINTAIN ELECTRICAL SERVICE TO ALL LIGHTING FIXTURES, DEVICES AND EQUIPMENT THAT ARE TO REMAIN. EXTEND CONDUIT AND WIRE AS REQUIRED WHERE DEMOLITION WORK AFFECTS ELECTRICAL SERVICE TO DOWNSTREAM LOADS THAT ARE TO REMAIN.
8. DISPOSE OF ALL MATERIALS OFF SITE AND INCLUDE ALL COSTS FOR DISPOSAL IN BID. ALL MATERIALS SHALL BE DISPOSED OF IN ACCORDANCE WITH ALL FEDERAL, STATE, AND LOCAL REGULATIONS, INCLUDING TOLP TESTING, PROPER DISPOSAL AND/OR RECYCLING OF FLUORESCENT LAMPS.
9. PROVIDE BLANK COVER PLATES WHERE SWITCHES AND DEVICES ARE REMOVED BUT EXISTING WALLS REMAIN INTACT.
10. RING OUT AND TAG ALL CIRCUITS AFFECTED BY THIS ALTERATION AT BOTH ENDS. MARK ALL UNUSED CIRCUIT BREAKERS "SPARE".
11. PROVIDE UPDATED TYPED-IN DIRECTORIES FOR ALL PANELS AFFECTED BY THIS ALTERATION.
12. VERIFY ALL UNDERGROUND AND IN SLAB UTILITY LOCATIONS PRIOR TO SAW-CUTTING OR PENETRATING ANY FLOOR SLAB.
13. COORDINATE ANY SHUT DOWN OF EXISTING SERVICES AND EQUIPMENT THAT ARE REMAINING IN USE WITH THE OWNER'S REPRESENTATIVE. WHERE EXISTING BUILDING SERVICE IS REQUIRED TO BE SHUT DOWN, INCLUDE ALL ASSOCIATED OVERTIME COSTS TO PERFORM THIS WORK DURING WEEKENDS AND EVENINGS INCLUDE ALL COSTS FOR PROVIDING TEMPORARY POWER WHERE SHUT DOWNS MUST OCCUR FOR PERIODS LONGER THAN THESE HOURS. COORDINATE ELECTRICAL SHUT DOWNS WITH THE OWNER 72 HOURS PRIOR TO SHUT DOWN.

**DEMOLITION KEY NOTES:**

- A. REMOVE ALL ELECTRICAL DEVICES ON WALLS TO BE DEMOLISHED (LIGHTING, POWER, FIRE ALARM, P/A, ETC.) INCLUDING CEILING MOUNTED LIGHTING. MAINTAIN BRANCH CIRCUIT SERVING LIGHTING FOR RECONNECTION TO NEW LIGHTING. ANY DEVICE LOCATED ON WALL NOT TO BE DEMOLISHED IS TO REMAIN (WALLS TO BE DEMOLISHED ARE SHOWN DASHED). REFER TO NEW WORK PLANS FOR EXTENT OF WORK.
- B. DISCONNECT AND REMOVE TOGGLE DISCONNECT SWITCH SERVING EXISTING EXHAUST FAN. MAINTAIN BRANCH CIRCUIT FOR RECONNECTION. REFER TO NEW WORK PLANS FOR NEW TOGGLE DISCONNECT SWITCH LOCATION.

**WARREN WOODS PUBLIC SCHOOL DISTRICT**  
**SERVING LINE RENOVATIONS**  
**WARREN WOODS MIDDLE SCHOOL**

ELECTRICAL DEMOLITION PLAN



- PRELIMINARY
- DESIGN DEVELOPMENT
- CONSTRUCTION
- FINAL RECORD

DRAWN BY: BAG  
 CHECKED BY: STP

REVISIONS:	DATE:
01	11/22/2021
02	12/06/2021
03	12/20/2021
ADDITION NO. 3	01/12/2022

DATE: 12/20/2021  
 SHEET NO.:

**ED1.00**

JOB NO.: 211918

**ELECTRICAL DEMOLITION PLAN**  
 SCALE: 1/8" = 1'-0"

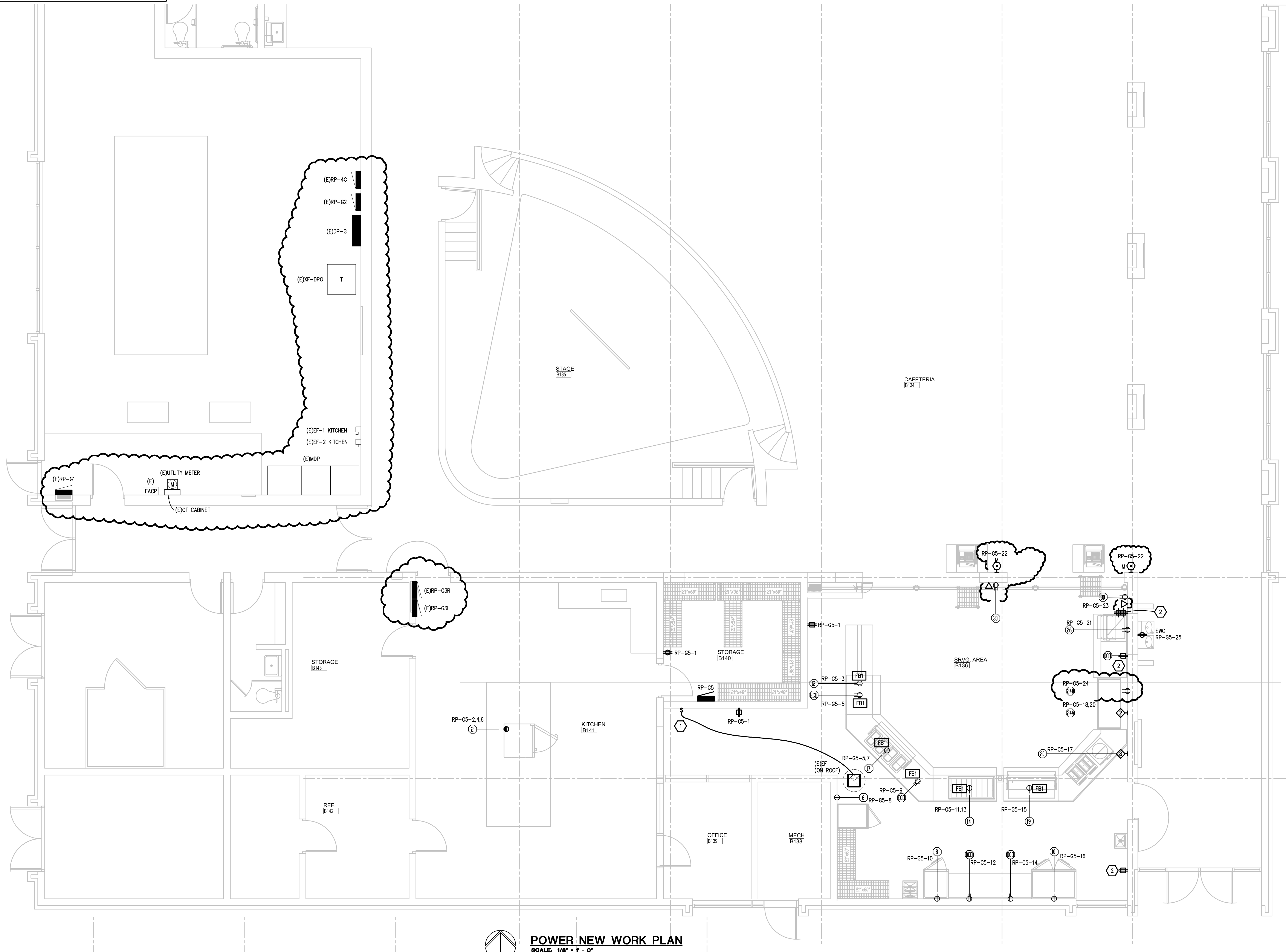
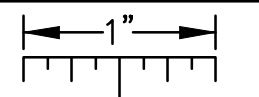
**WA**  
 WAKELY ASSOCIATES, INC.  
 ARCHITECTS  
 30500 VAN DYKE AVENUE  
 SUITE 209  
 WARREN, MICHIGAN 48093  
 PH: 586.573.4100  
 FX: 586.573.0822  
 www.WakelyAIA.com

**PBA**  
 Peter Basso Associates Inc.  
 CONSULTING ENGINEERS  
 3345 Livonia, Suite 100  
 Troy, Michigan 48068-2276  
 Tel: 248-678-5565  
 Fax: 248-678-0007  
 www.PeterBassoAssociates.com  
 pbpa@pbpa.com, 248-678-0008

\\pba.local\projects\2021\0395-00\CAD\2021-0395-00-ED1.dwg, ED1.00, 1/12/2022 9:34:11 AM, Brett A. Gabrath, \_Default.pcb, 0.28639, Peter Basso Associates Inc.



THE FOLLOWING DIMENSION EQUALS ONE INCH WHEN PRINTED TO SCALE.



**POWER NEW WORK PLAN**  
SCALE: 1/8" = 1' - 0"

Item	Qty	Equipment Description	Voltage	Phase	Amps	Connection Type	Hgt A.F.F.	Comments
2	1	COMBI-OVEN	208	3	66	DIRECT		
6	1	HOT CART	120	1	16	C&P	1'-6"	RELOCATED EQUIPMENT - F.E.C. TO VERIFY
8	1	REFRIGERATOR	120	1	9	C&P	7'-6"	RELOCATED EQUIPMENT - F.E.C. TO VERIFY
10	1	REFRIGERATOR	120	1	12	C&P	7'-6"	RELOCATED EQUIPMENT - F.E.C. TO VERIFY
12	1	MILK COOLER	120	1	9	C&P	4" MAX. A.F.F.	RELOCATED EQUIPMENT - F.E.C. TO VERIFY
14	1	HEATED SANDWICH SLIDE	120/208	1	14.1	C&P	4" MAX. A.F.F.	
17	1	HOT FOOD COUNTER	120/208	1	24	C&P	4" MAX. A.F.F.	
19	1	COLD FOOD COUNTER	120	1	10	C&P	4" MAX. A.F.F.	
20	1	UTILITY COUNTER	120	1	50	C&P	1'-6"	COUNTER TO HAVE ICB BOX LOCATED INSIDE / SINGLE CORD & PLUG TO SERVICE ALL EQUIPMENT
24A	1	AIRSCREEN MERCHANDISER	230	1	9.2	C&P	1'-6"	FOR CONDENSING UNIT
24B	1	AIRSCREEN MERCHANDISER	120	1	10.8	C&P	1'-6"	FOR CONTROLS
26	1	BREAKFAST COUNTER	120	1	10	C&P	1'-6"	
30	2	P.O.S. TERMINALS	120	1	15	C&P	1'-6"	P.O.S. TERMINALS REQUIRE DEDICATED GROUND RECEPTACLES
DCO	3	DUPLEX RECEPTACLE OUTLET	120	1	16	C&P	4'-0"	EACH RECEPTACLE REQUIRES A SEPARATE CIRCUIT
ECO	2	DUPLEX RECEPTACLE OUTLET	120	1	16	C&P	4" MAX. A.F.F.	EACH RECEPTACLE REQUIRES A SEPARATE CIRCUIT

(NOTE: ELECTRICAL SYMBOLS APPLY TO THIS SHEET ONLY.)

SYMBOL	DESCRIPTION	SYMBOL	DESCRIPTION
A.F.F.	ABOVE FINISHED FLOOR	⊖	120V GFCI SINGLE RECEPTACLE
DCO	DUPLEX CONVENIENCE OUTLET	⊖	SINGLE GFCI POWER RECEPTACLE TO MATCH EQUIPMENT
D.F.A.	DOWN FROM ABOVE	⊖	FLUSH FLOOR RECEPTACLE W/HOIKED BRASS COVER
E.C.	ELECTRICAL CONTRACTOR	⊖	FLUSH MOUNTED JUNCTION BOX IN CEILING
F.E.C.	FLUORESCENT EQUIPMENT CONTRACTOR	⊖	FLUSH MOUNTED JUNCTION BOX IN WALL
G.C.	GENERAL CONTRACTOR	⊖	FLUSH MOUNTED JUNCTION BOX IN FLOOR
⊖	120V GROUND FAULT DUPLEX RECEPTACLE	⊖	CONDUIT OUT-OF-CEILING
⊖	SPLIT WIRED GROUND FAULT DUPLEX RECEPTACLE	⊖	CONDUIT OUT-OF-WALL
⊖	SWITCH	⊖	CONDUIT OUT-OF-FLOOR
⊖	FLUORESCENT LIGHT	⊖	LIGHT

DIMENSIONS FROM ABOVE FINISHED FLOOR ARE TO BE TO THE BOTTOM OF THE DEVICE.

**ELECTRICAL GENERAL NOTES:**

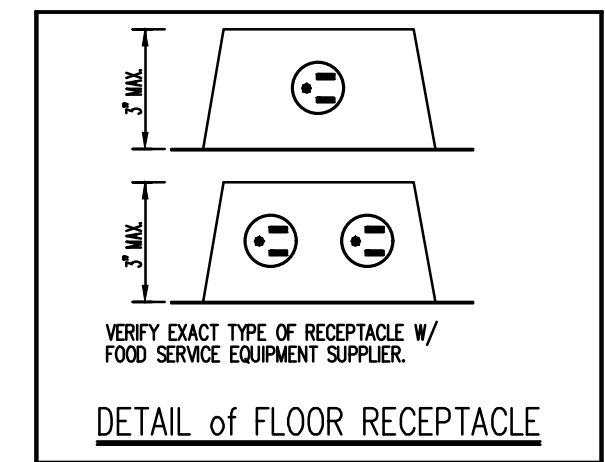
- THESE DRAWINGS REPRESENT THE GENERAL EXTENT AND ARRANGEMENT OF SYSTEMS. COORDINATE EXACT EQUIPMENT LOCATIONS, ELEVATIONS, AND FINAL CONNECTION REQUIREMENTS. PROVIDE EACH SYSTEM COMPLETE, INCLUDING ALL NECESSARY COMPONENTS, FITTINGS AND OFFSETS.
- INSTALL SYSTEMS SUCH THAT REQUIRED CLEARANCE AND SERVICE ACCESS SPACE IS PROVIDED AROUND ALL MECHANICAL AND ELECTRICAL EQUIPMENT, AND AROUND ANY COMPONENTS WHICH REQUIRE SERVICE ACCESS.
- COORDINATE AND PROVIDE ACCESS DOORS WITHIN INACCESSIBLE CEILING, SHAFT, AND CHASE AREAS FOR ALL COMPONENTS WHICH REQUIRE SERVICE ACCESS. REFER TO ARCHITECTURAL DRAWINGS FOR CEILING TYPES.
- PROVIDE SUPPLEMENTARY STEEL AS REQUIRED FOR THE PROPER SUPPORT OF ALL SYSTEMS.
- COORDINATE THE MOUNTING HEIGHTS OF DEVICES WITH ARCHITECTURAL ELEVATIONS AND THE TRADES INSTALLING THE WORK.
- COORDINATE EXACT LOCATIONS OF ALL FLOOR SERVICE FITTINGS WITH FINAL FURNITURE LAYOUT DRAWINGS.
- REFER TO LIGHTING CONTROL SCHEDULE FOR ROOM CONTROL AND EMERGENCY LIGHTING CIRCUIT CONTROL REQUIREMENTS. DESIGNATION FOR ROOM IS INDICATED AS A LETTERED OVAL SYMBOL.
- WHERE EXISTING CIRCUITS ARE EXTENDED, PROVIDE GROUNDING PER THE NEC.
- CIRCUIT NEW EXIT SIGN TO UN-SWITCHED HOT LEG OF ADJACENT LIGHTING BRANCH CIRCUIT.

**FOOD SERVICE GENERAL NOTES:**

- LOCATIONS SHOWN ARE APPROXIMATE CONNECTION POINTS ON EQUIPMENT. FOOD SERVICE EQUIPMENT CONTRACTOR (FSEC) SHALL PROVIDE FULLY DIMENSIONED ROUGH-IN PLAN. THE ELECTRICAL CONTRACTOR SHALL FIELD COORDINATE WITH THE FSEC FOR EXACT EQUIPMENT LOCATIONS.
- UTILITY REQUIREMENTS, DIMENSIONS, INTERCONNECTIONS AND SO ON ARE BASED ON THE FIRST NAMED MANUFACTURER IN THE SPECIFICATIONS. THE FSEC IS RESPONSIBLE FOR ADVISING ANY DEVIATIONS WHICH MAY RESULT FROM THE USE OF MANUFACTURERS OTHER THAN THE FIRST NAMED.
- FSEC TO FURNISH AND INSTALL CORD AND PLUG AND COORDINATE MATCHING RECEPTACLE (BY ELECTRICAL CONTRACTOR) TO FOOD SERVICE EQUIPMENT, AS INDICATED ON PLAN.
- ALL SINGLE PHASE RECEPTACLES 50A OR LESS, AND THREE PHASE RECEPTACLES 100A OR LESS, MUST BE GFCI PROTECTED. WHERE NOT READILY ACCESSIBLE PER THE NEC PROVIDE GFCI PROTECTION BY OTHER MEANS THAN RECEPTACLE.
- REFER TO FOOD SERVICE DRAWINGS FOR ADDITIONAL REQUIREMENTS.

**CONSTRUCTION KEY NOTES:**

- NEW EXHAUST FAN TOGGLE DISCONNECT SWITCH, EXTEND CONDUIT AND WIRE AS REQUIRED.
- REPLACE WITH NEW GFCI RECEPTACLE AND PROVIDE NEW COVER PLATE.



FBI PROVIDE FOR FLOOR DEVICES

**DIVISION 1400 NOTES**

- THIS DRAWING AND THE DATA CONTAINED HEREIN ARE PROVIDED FOR BIDDING PURPOSES ONLY AND ARE NOT INTENDED AS ROUGH-IN DRAWINGS TO BE USED ON THE PROJECT SITE. THE F.E.C. SHALL PROVIDE FINAL DIMENSIONED ROUGH-IN DRAWINGS AND EQUIPMENT DATA FOR CONSTRUCTION PURPOSES.
- REFER TO THE DIVISION 1400 GENERAL AND ITEM SPECIFICATIONS FOR ADDITIONAL INSTALLATION REQUIREMENTS.
- F.E.C. SHALL VERIFY UTILITY REQUIREMENTS OF OWNER'S EXISTING EQUIPMENT OF ANY SCHEDULED FOR RE-USE.

**DIVISION 16 NOTES**

- EC SHALL ROUGH-IN ELECTRICAL SERVICE THROUGH WALLS, FLOORS AND CEILING. EC TO PROVIDE AND INSTALL ELECTRICAL SERVICES FROM ROUGH-INS TO FINAL CONNECTION POINTS ON FOODSERVICE EQUIPMENT.
- EC SHALL FURNISH AND INSTALL ALL DISCONNECT SWITCHES AS REQUIRED FOR THE EQUIPMENT IN ACCORDANCE WITH PREVAILING ELECTRICAL AND BUILDING CODES.
- EC SHALL FURNISH AND INSTALL ALL CONDUIT AND WIRING BETWEEN REMOTE CONTROL PANELS AND THE FOODSERVICE EQUIPMENT.
- EC SHALL FURNISH AND INSTALL ALL CONDUIT AND WIRING BETWEEN REMOTE CONTROL PANELS AND THE FOODSERVICE EQUIPMENT.

ALL CONDUITS SHALL BE RUN IN WALL AT 6" AFF MINIMUM OR AS INDICATED. ALL EXPOSED CONDUIT SHALL BE RUN TIGHT TO THE WALL. EC SHALL NOT ATTACH CONDUIT TO ANY LEGS OR BRACKETS. BRACKETS MAY BE SECURED TO THE BOTTOM OF THE TABLES OR OTHER STEEL SURFACES. ALL FLEXIBLE CONDUIT SHALL BE "SEALTITE" OR EQUAL. FLEXIBLE METAL CONDUIT IS NOT ACCEPTABLE. ALL COVER PLATES SHALL BE STAINLESS STEEL.

DRAWN BY: BAG  
CHECKED BY: STP

REVISIONS:  
11/22/2021  
12/20/2021  
12/20/2021  
01/12/2022

DATE: 12/20/2021  
SHEET NO.:

**WARREN WOODS PUBLIC SCHOOL DISTRICT**  
**SERVING LINE RENOVATIONS**  
**WARREN WOODS MIDDLE SCHOOL**

**WA**  
WAKELY ASSOCIATES, INC.  
ARCHITECTS

30500 VAN DYKE AVENUE  
SUITE 209  
WARREN, MICHIGAN 48093  
PH: 586.573.4100  
FX: 586.573.0822  
www.WakleyAIA.com

**P&B**  
Peter Basso Associates Inc  
CONSULTING ENGINEERS

3345 Livonia, Suite 100  
Troy, Michigan 48068-3276  
Tel: 248-678-5668  
Fax: 248-678-0007  
www.PeterBassoAssociates.com  
pba@pba.com, 248-678-0008

POWER NEW WORK PLAN

PRELIMINARY   
DESIGN DEVELOPMENT   
CONSTRUCTION   
FINAL RECORD

DRAWN BY: BAG  
CHECKED BY: STP

REVISIONS:  
11/22/2021  
12/20/2021  
12/20/2021  
01/12/2022

DATE: 12/20/2021  
SHEET NO.:

**E3.01**

JOB NO.: 211918

\\pba\local\projects\2021\2021-0395-00\CAD\2021-0395-00-PP1.dwg, E3.01, 1/12/2022 9:34:29 AM, Brett A. Galbraith, \_Default.lpc3\_0.28639, Peter Basso Associates Inc.