

November 10, 2023

ADDENDUM NO.01 to the plans and specifications for the Macomb County Administration Building, Talmer Building and 16th Circuit Court, New Door Hardware/Rekeying, Mt. Clemens, MI, Architect's Project No. 231996, dated October 23, 2023.

The above plans and specifications are modified, supplemented or augmented as follows, and this ADDENDUM NO. 01, is hereby made a part of the contract documents.

Specification Sections 08710 "Finish Hardware, Door Index, Sheet A1.1T and Sign In Sheet are being issued with this Addendum.

GENERAL ITEMS

ITEM NO. 1: Sign in Sheet attached

ITEM NO. 2: Time of completion shall be March 10, 2024.

ITEM NO. 3: Refer to Spec Section 08710 "Finish Hardware"-Talmer Building Door Index (Re-Issued): Refer to 3.2 Hardware Sets:
1. Revise Hardware Group No. 1 to Hardware Group No. 24.
2. Revise Hardware Group No. 2 to Hardware Group No. 25.
Note: 02 requires no new core or hardware.

ITEM NO. 4: Refer to Sheet A1.1T (Re-Issued):
1. Revised Hardware Sets 01 & 02 to 24 & 25 respectively.
2. Door 137A is not in Contract.
3. Door B1A shall be Hardware Set 24.
4. Door B1B is not in Contract.

ITEM NO. 5: Post Bid Interviews will be held directly after Bid Opening.

Q & A

1. The Door Index for the Talmer Building indicates Hardware Set #24 & Hardware Set #25. Per the specifications only Hardware Set #1 through Hardware Set #23 is listed. Please clarify. **See Item No. 3 above.**
2. Please clarify the completion date, one area of the specifications indicates as May 31, 2024, and another are of the specifications indicates March 10, 2024. **See General Item No. 2.**

3. Drawing A1.1T indicates Hardware Set #1 & Hardware Set #2, but the Door Index in the specification indicates Hardware Set #24 & Hardware Set #25. Please advise what is correct. **See General Item No. 3.**
4. In the specifications (Page 08710-7) Hardware Set #1 indicates a Primus Core 20-740, Hardware Set #2 does not indicate what we are to provide: **Hardware Set No. 2 is there to designate that nothing is required for that door opening.**
5. Administration Building:
 - A. Opening 016 appears to be the only new doors/frame on the project, but the door schedule gives this opening note 12, which states "Not in Contract". Are we meant to be providing a new pair of HM doors/HM frame/HW set 17 per the DS, or excluding the opening in its entirety per the door schedule note? **Exclude opening 016 in its entirety.**
 - B. Openings 800, 922A, 924, 927A, and 943 are assigned hardware sets on the door schedule (06, 10, 10, 10 and 06, respectively), but are also given "Not in Contract" door schedule note 12. Is new hardware required at these openings per the hardware set assignment, or should we exclude these openings entirely? **Exclude the above openings in their entirety.**
 - C. Openings 941 and 941A are not given hardware set assignments. What is required for these openings? **Doors are not in Contract.**
6. Circuit Court Building:
 - A. Openings 246, 267, 307, and 378 are not given hardware set assignments. What is required for these openings? **246 is Hardware Set 01, 267 is Hardware Set 06, 307 is Hardware Set 08, 378 is not in Contract.**
 - B. Openings 605, 606, and 607 are the only openings in the circuit court building assigned a door elevation. Can we assume that these, like all other openings, are existing doors and frames? **Yes, Doors & Frames are to remain.**
7. Talmer Building:
 - A. Opening 137A is not given a hardware set assignment. What is required for this opening? **Refer to Item No. 3 under General of this Addendum. Door is not in Contract.**

END OF ADDENDUM NO. 01

Cc: Denise Mentzer, Macomb County
Benjamin Treppa, Macomb County
Ron Syme, Wakely Associates
Domenic Guadagnino, Wakely Associates
Dave Littlefield, UBS

MACOMB COUNTY

ADMIN. BLDG., TALMER BLDG. & 16TH CIRCUIT COURT

NEW DOOR HARDWARE/REKEYING 231996

OCTOBER 23, 2023

SECTION 08710 - FINISH HARDWARE - **TALMER BUILDING**

PART 1 - GENERAL

- 1.1 Refer to "General and Special Conditions", and "Instructions to Bidders", Division 1 of Specifications. Requirements of these Sections and the project drawings shall govern work in this section.

- 1.2 Work Included:
 - A. Furnish all items of Finish Hardware specified, scheduled, shown or required herein except those items specifically excluded from this section of the specification.

 - B. Related work:
 1. Division 00 - Procurement and Contracting Requirements
 2. Division 01 - General Requirements

 - C. Specific Omissions: Hardware for the following is not included in this project, unless specifically listed in the hardware sets:
 1. Access doors and panels
 2. Overhead and Coiling doors

- 1.3 Quality Assurance
 - A. Requirements of Regulatory Agencies:
 1. Furnish finish hardware to comply with the requirements of laws, codes, ordinances, and regulations of the governmental authorities having jurisdiction where such requirements exceed the requirements of the Specifications.
 2. Furnish finish hardware to comply with the requirements of the regulations for public building accommodations for physically handicapped persons of the governmental authority having jurisdiction and to comply with Americans with Disabilities Act.

3. Provide hardware for fire-rated openings in compliance with NFPA 80 and state and local building code requirements. Provide only hardware that has been tested and listed by UL for types and sizes of doors required and complies with requirements of door and door frame labels.

B. Hardware Supplier:

1. Shall be an established firm dealing in contract builders' hardware. He must have adequate inventory, qualified personnel on staff and be located within 100 miles of the project. The distributor must be a factory-authorized dealer for all materials required. The supplier shall be or have in employment an Architectural Hardware Consultant (AHC).

C. Manufacturer:

1. Obtain each type of hardware (cylinders, cores) from a single manufacturer, although several may be indicated as offering products complying with requirements.

1.4 Submittals:

A. Hardware Schedule

1. Submit Hardware Schedules as directed in Division 1.
2. Follow guidelines established in Door & Hardware Institute Handbook (DHI) Sequence and Format for the Hardware Schedule unless noted otherwise.
3. Schedule will include the following:
 - a. Door Index including opening numbers and the assigned Finish Hardware set.
 - b. Preface sheet listing category only and manufacturer's names of items being furnished as follows:

| CATEGORY | SPECIFIED | SCHEDULED |
|-------------|----------------|----------------|
| Hinges | Manufacturer A | Manufacturer B |
| Lock sets | Manufacturer X | Manufacturer X |
| Kick Plates | Open | Manufacturer Z |

- c. Opening Description: Single or pair, number, room locations, hand, active leaf, degree of swing, size, door material, frame material, and UL listing.
- d. Hardware Description: Quantity, category, product number, fasteners, and finish.
- e. Headings that refer to the specified Hardware Set Numbers.
- f. Scheduling Sequence shown in Hardware Sets.
- g. Product data of each hardware item, and shop drawings where required, for special conditions and specialty hardware.
- h. "Vertical" scheduling format only. "Horizontal" schedules will be returned "Not Approved."
- i. Typed Copy.
- j. Double-Spacing.
- k. 8-1/2 x 11 inch sheets
- l. U.S. Standard Finish symbols or BHMA Finish symbols.

B. Product Data:

1. Submit, in booklet form Manufacturers Catalog cut sheets of scheduled hardware.
2. Submit product data with hardware schedule.

C. Samples:

1. Prior to submittal of the final hardware schedule and prior to final ordering of finish hardware, submit one sample, if required, of each type of exposed hardware unit, finished as required and tagged with full description for coordination with schedule.
2. Samples will be returned to the supplier. Units, which are acceptable and remain undamaged through submittal, review and field comparison procedures may, after final check of operation, be used in the work, within limitations of keying coordination requirements.

D. Key Schedule:

1. Submit detailed schedule indicating clearly how the Owner's final keying instructions have been followed.
2. Submit as a separate schedule.

- E. Submit to General Contractor, the factory order acknowledgement numbers for the various hardware items to be used on the project. The factory order acknowledgement numbers shall help to facilitate and expedite any service that may be required on a particular hardware item. General Contractor shall keep these order acknowledgement numbers on file in the construction trailer.

1.5 Product Delivery, Storage, and Handling:

- A. Label each item of hardware with the appropriate door number and Hardware Schedule heading number, and deliver to the installer so designated by the contractor.

1.6 Existing Conditions:

- A. Where existing doors, frames and/or hardware are to remain, conditions, preparations and functions shall be field verified to confirm compatibility with specified hardware. Where any incompatibility is discovered, notify the General Contractor immediately and provide a suggested solution based on industry standard business practices.

1.7 Warranties:

- A. Refer to Division 1 for warranty requirements.
- B. Special Warranty Periods:
 - 1. Closers shall carry manufacturer's 30-year warranty against manufacturing defects and workmanship.
 - 2. Locksets shall carry manufacturer's 3-year warranty against manufacturing defects and workmanship.
 - 3. Exit Devices shall carry manufacturer's 10-year warranty against manufacturing defects and workmanship.
 - 4. Continuous gear hinges shall carry manufacturer's lifetime warranty to be free from defects in material and workmanship.

MACOMB COUNTY

ADMIN. BLDG., TALMER BLDG. & 16TH CIRCUIT COURT

NEW DOOR HARDWARE/REKEYING 231996

OCTOBER 23, 2023

5. Balance of items shall carry a manufacturer's 1-year warranty against manufacturing defects and workmanship.

C. During the warranty period, replace defective work, including labor, materials and other costs incidental to the work.

PART 2 - PRODUCT

2.1 Furnish each category with the products of only one manufacturer unless specified otherwise; this requirement is mandatory whether various manufacturers are listed or not.

2.2 Provide the products of manufacturer designated or if more than one manufacturer is listed, the comparable product of one of the other manufacturers listed. Where only one manufacturer or product is listed, it is understood that this is the owner's Building Standard and "no substitution" is allowed.

A. Miscellaneous:

1. Furnish items not categorized in the above descriptions but specified by manufacturer's names in Hardware Sets.

B. Fasteners:

1. Furnish fasteners of the proper type, size, quantity and finish. Use machine screws and expansion shields for attaching hardware to concrete or masonry, and wall grip inserts at hollow wall construction. Furnish machine screws for attachment to reinforced hollow metal doors and frames and reinforced aluminum doors and frames. Furnish full thread wood screws for attachment to solid wood doors and frames. "TEK" type screws are not acceptable.

2. Sex bolts will not be permitted on reinforced metal doors or wood doors where blocking is specified.

MACOMB COUNTY

ADMIN. BLDG., TALMER BLDG. & 16TH CIRCUIT COURT

NEW DOOR HARDWARE/REKEYING 231996

OCTOBER 23, 2023

2.3 Finishes:

- A. Generally, Dull Chrome, US26D / BHMA 626. Provide finish for each item as indicated in sets.

2.4 Templates and Hardware Location:

- A. Furnish hardware made to template. Supply required templates and hardware locations to the door and frame manufacturers.
- B. Furnish metal template to frame/door supplier for continuous hinge.

2.5 Cylinders and Keying:

- A. All cylinders for this project will be supplied by one supplier regardless of door type and location.
- B. The Finish Hardware supplier will meet with Architect and/or Owner to finalize keying requirements and obtain keying instructions in writing.
 - 1. Supplier shall include the cost of this service in his proposal.
- C. Provide a cylinder for all hardware components capable of being locked.
- D. Provide cylinders master and grand master keyed to an existing Schlage Primus FSIC (Full Size Interchangeable Core) system according to Owner's instructions. Provide change keys, master keys and grand master keys as required by Owner.

PART 3 - EXECUTION

3.1 Installation

A. General:

1. Install hardware according to manufacturers installations and template dimensions. Attach all items of finish hardware to doors, frames, walls, etc. with fasteners furnished and required by the manufacture of the item.

3.2 Hardware Sets:

Hardware Group No. 24

EACH TO HAVE:

| QTY | DESCRIPTION | CATALOG NUMBER | FINI | MFR |
|-----|----------------|--|------|-----|
| 1 | EA PRIMUS CORE | 20-740 | SH | SCH |
| | | (BALANCE OF EXIST'G HDWE TO REMAIN) | | |

Hardware Group No. 25

EACH TO HAVE:

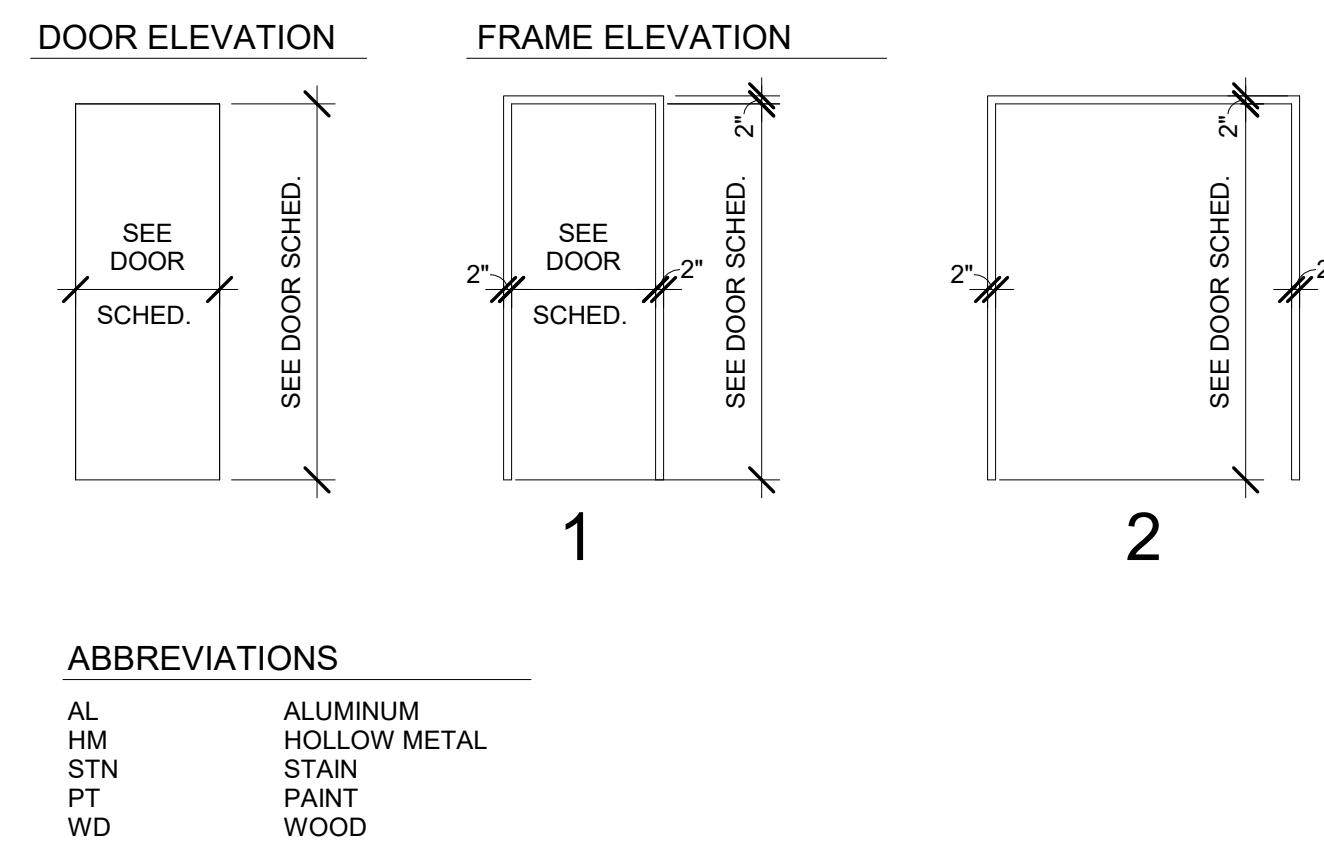
| QTY | DESCRIPTION | CATALOG NUMBER | FINI | MFR |
|-----|-------------|-----------------------------|------|-----|
| | | (EXIST'G HDWE TO REMAIN) | SH | |

END OF SECTION

**Door/Hardware Index
 – TALMER BLDG.**

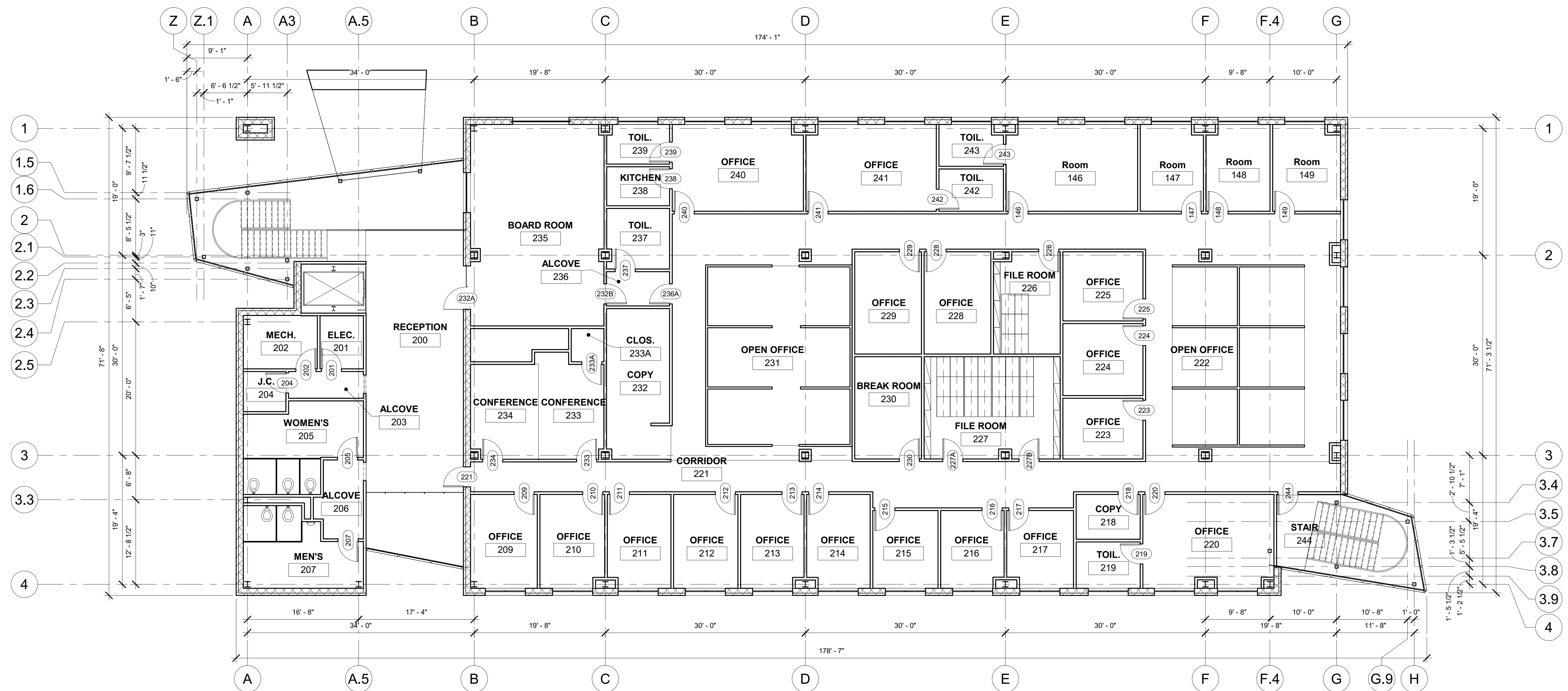
| Opening | HwSet |
|---------|-------|
| T100A | 24 |
| T100B | 25 |
| T103 | 24 |
| T104A | 24 |
| T105A | 24 |
| T107A | 25 |
| T109A | 25 |
| T111A | 24 |
| T112 | 24 |
| T112A | 24 |
| T113A | 24 |
| T115A | 24 |
| T116A | 24 |
| T117A | 24 |
| T118A | 24 |
| T120A | 24 |
| T121A | 24 |
| T122A | 24 |
| T132A | 24 |
| T134A | 24 |
| T135A | 24 |
| T136A | 24 |
| T138A | 24 |
| T138B | 24 |
| T139A | 25 |
| T146 | 24 |
| T147 | 24 |
| T148 | 24 |
| T149 | 24 |
| T201 | 24 |
| T202 | 24 |
| T204 | 24 |
| T205 | 25 |
| T207 | 25 |
| T209 | 24 |
| T210 | 24 |
| T211 | 24 |
| T212 | 24 |

| Opening | HwSet |
|---------|-------|
| T213 | 24 |
| T214 | 24 |
| T215 | 24 |
| T216 | 24 |
| T217 | 24 |
| T218 | 25 |
| T219 | 25 |
| T220 | 24 |
| T221 | 24 |
| T223 | 24 |
| T224 | 24 |
| T225 | 24 |
| T226 | 24 |
| T227A | 24 |
| T227B | 24 |
| T228 | 24 |
| T229 | 24 |
| T230 | 25 |
| T232A | 24 |
| T232B | 24 |
| T233 | 24 |
| T233A | 24 |
| T234 | 24 |
| T236A | 24 |
| T237 | 25 |
| T238 | 24 |
| T239 | 25 |
| T240 | 24 |
| T241 | 24 |
| T242 | 25 |
| T243 | 25 |
| T244 | 24 |
| TB1A | 25 |
| TB1B | 24 |



| Mark | Width | Height | Door Material | Door Finish | Frame Type | Frame Material | Finish | Fire Rating | Hardware Sets | Comments |
|------|-------|--------|---------------|-------------|------------|----------------|--------|-------------|---------------|----------|
| 100A | 6'-0" | 7'-0" | AL | PFN | 2 | AL | PFN | | 24 | |
| 100B | 6'-0" | 7'-0" | AL | PFN | 2 | AL | PFN | | 25 | |
| 103 | 3'-0" | 8'-0" | HM | PT | 1 | HM | PT | | 24 | |
| 104A | 3'-0" | 8'-0" | HM | PT | 1 | HM | PT | | 24 | |
| 105A | 3'-0" | 8'-0" | HM | PT | 1 | HM | PT | | 24 | |
| 107A | 3'-0" | 8'-0" | WD | STN | 1 | HM | PT | | 25 | |
| 109A | 3'-0" | 8'-0" | WD | STN | 1 | HM | PT | | 25 | |
| 111A | 3'-0" | 8'-0" | WD | STN | 1 | HM | PT | | 24 | |
| 112 | 3'-0" | 8'-0" | WD | STN | 1 | HM | PT | | 24 | |
| 112A | 3'-0" | 8'-0" | WD | STN | 1 | HM | PT | | 24 | |
| 113A | 3'-0" | 8'-0" | WD | STN | 1 | HM | PT | | 24 | |
| 115A | 3'-0" | 8'-0" | WD | STN | 1 | HM | PT | | 24 | |
| 116A | 3'-0" | 8'-0" | WD | STN | 1 | HM | PT | | 24 | |
| 117A | 3'-0" | 8'-0" | WD | STN | 1 | HM | PT | | 24 | |
| 118A | 3'-0" | 8'-0" | WD | STN | 1 | HM | PT | | 24 | |
| 120A | 3'-0" | 8'-0" | WD | STN | 1 | HM | PT | | 24 | |
| 121A | 3'-0" | 8'-0" | WD | STN | 1 | HM | PT | | 24 | |
| 122A | 3'-0" | 8'-0" | WD | STN | 1 | HM | PT | | 24 | |
| 132A | 3'-0" | 8'-0" | WD | STN | 1 | HM | PT | | 24 | |
| 134A | 3'-0" | 8'-0" | WD | STN | 1 | HM | PT | | 24 | |
| 135A | 3'-0" | 8'-0" | WD | STN | 1 | HM | PT | | 24 | |
| 136A | 3'-0" | 8'-0" | WD | STN | 1 | HM | PT | | 24 | |
| 138A | 3'-0" | 8'-0" | WD | STN | 1 | HM | PT | | 24 | |
| 138B | 3'-0" | 8'-0" | WD | STN | 1 | HM | PT | | 24 | |
| 139A | 3'-0" | 8'-0" | WD | STN | 1 | HM | PT | | 25 | |
| 146 | 3'-0" | 8'-0" | WD | STN | 1 | HM | PT | | 24 | |
| 147 | 3'-0" | 8'-0" | WD | STN | 1 | HM | PT | | 24 | |
| 148 | 3'-0" | 8'-0" | WD | STN | 1 | HM | PT | | 24 | |
| 149 | 3'-0" | 8'-0" | WD | STN | 1 | HM | PT | | 24 | |
| 201 | 3'-0" | 8'-0" | WD | STN | 1 | HM | PT | | 24 | |
| 202 | 3'-0" | 8'-0" | WD | STN | 1 | HM | PT | | 24 | |
| 204 | 3'-0" | 8'-0" | WD | STN | 1 | HM | PT | | 24 | |
| 205 | 3'-0" | 8'-0" | WD | STN | 1 | HM | PT | | 25 | |
| 207 | 3'-0" | 8'-0" | WD | STN | 1 | HM | PT | | 25 | |
| 209 | 3'-0" | 8'-0" | WD | STN | 1 | HM | PT | | 24 | |
| 210 | 3'-0" | 8'-0" | WD | STN | 1 | HM | PT | | 24 | |
| 211 | 3'-0" | 8'-0" | WD | STN | 1 | HM | PT | | 24 | |
| 212 | 3'-0" | 8'-0" | WD | STN | 1 | HM | PT | | 24 | |

| Mark | Width | Height | Door Material | Door Finish | Frame Type | Frame Material | Finish | Fire Rating | Hardware Sets | Comments |
|------|-------|--------|---------------|-------------|------------|----------------|--------|-------------|---------------|----------|
| 213 | 3'-0" | 8'-0" | WD | STN | 1 | HM | PT | | 24 | |
| 214 | 3'-0" | 8'-0" | WD | STN | 1 | HM | PT | | 24 | |
| 215 | 3'-0" | 8'-0" | WD | STN | 1 | HM | PT | | 24 | |
| 216 | 3'-0" | 8'-0" | WD | STN | 1 | HM | PT | | 24 | |
| 217 | 3'-0" | 8'-0" | WD | STN | 1 | HM | PT | | 24 | |
| 218 | 3'-0" | 8'-0" | WD | STN | 1 | HM | PT | | 25 | |
| 219 | 3'-0" | 8'-0" | WD | STN | 1 | HM | PT | | 25 | |
| 220 | 3'-0" | 8'-0" | WD | STN | 1 | HM | PT | | 24 | |
| 221 | 3'-0" | 8'-0" | WD | STN | 1 | HM | PT | | 24 | |
| 222 | 3'-0" | 8'-0" | WD | STN | 1 | HM | PT | | 24 | |
| 223 | 3'-0" | 8'-0" | WD | STN | 1 | HM | PT | | 24 | |
| 224 | 3'-0" | 8'-0" | WD | STN | 1 | HM | PT | | 24 | |
| 225 | 3'-0" | 8'-0" | WD | STN | 1 | HM | PT | | 24 | |
| 226 | 3'-0" | 8'-0" | WD | STN | 1 | HM | PT | | 24 | |
| 227A | 3'-0" | 8'-0" | WD | STN | 1 | HM | PT | | 24 | |
| 227B | 3'-0" | 8'-0" | WD | STN | 1 | HM | PT | | 24 | |
| 228 | 3'-0" | 8'-0" | WD | STN | 1 | HM | PT | | 24 | |
| 229 | 3'-0" | 8'-0" | WD | STN | 1 | HM | PT | | 24 | |
| 230 | 3'-0" | 8'-0" | WD | STN | 1 | HM | PT | | 24 | |
| 232A | 3'-4" | 7'-8" | WD | STN | 2 | HM | PT | | 25 | |
| 232B | 3'-0" | 8'-0" | WD | STN | 1 | HM | PT | | 24 | |
| 233 | 3'-0" | 8'-0" | WD | STN | 1 | HM | PT | | 24 | |
| 233A | 3'-0" | 8'-0" | WD | STN | 1 | HM | PT | | 24 | |
| 234 | 3'-0" | 8'-0" | WD | STN | 1 | HM | PT | | 24 | |
| 236A | 3'-0" | 8'-0" | WD | STN | 1 | HM | PT | | 24 | |
| 237 | 3'-0" | 8'-0" | WD | STN | 1 | HM | PT | | 25 | |
| 238 | 3'-0" | 8'-0" | WD | STN | 1 | HM | PT | | 24 | |
| 239 | 3'-0" | 8'-0" | WD | STN | 1 | HM | PT | | 25 | |
| 240 | 3'-0" | 8'-0" | WD | STN | 1 | HM | PT | | 24 | |
| 241 | 3'-0" | 8'-0" | WD | STN | 1 | HM | PT | | 24 | |
| 242 | 3'-0" | 8'-0" | WD | STN | 1 | HM | PT | | 24 | |
| 243 | 3'-0" | 8'-0" | WD | STN | 1 | HM | PT | | 25 | |
| 244 | 3'-0" | 8'-0" | WD | STN | 1 | HM | PT | | 24 | |
| B1A | 3'-0" | 8'-0" | WD | STN | 1 | HM | PT | | 24 | |



1 SECOND FLOOR COMPOSITE PLAN
A1.1T
1/8" = 1'-0"
TRUE NORTH



WAKELY ASSOCIATES, INC.
ARCHITECTS
30500 VAN DYKE AVENUE
SUITE 209
WARREN, MICHIGAN 48093
PH: 586.573.4100
FX: 586.573.0822
www.wakelyaia.com

MACOMB COUNTY BOARD OF COMMISSIONERS
DOOR HARDWARE RENOVATION PROJECT
ADMINISTRATION, 16TH CIRCUIT COURT AND TALMER BUILDING

TALMER BUILDING
SECOND FLOOR
COMPOSITE PLAN AND
DOOR SCHEDULES

- PRELIMINARY
- DESIGN DEVELOPMENT
- CONSTRUCTION
- FINAL RECORD

DRAWN BY: KAN
CHECKED BY: RAS

REVISIONS:
11/13/2023 ADDENDUM 1

DATE: OCTOBER 23, 2023
SHEET NO.:

A1.1T

JOB NO.: 231996